



LIN28A mouse mAb

Catalog No	YP-Ab-01097
Isotype	IgG
Reactivity	Human;Mouse
Applications	WB
Gene Name	lin28a
Protein Name	
Immunogen	Purified recombinant human LIN28A protein fragments expressed in E.coli
Specificity	This antibody detects endogenous levels of LIN28A and does not cross-react with related proteins.
Formulation	Liquid in PBS containing 50% glycerol, 0.5% BSA and 0.02% sodium azide.
Source	Monoclonal, Mouse
Purification	The antibody was affinity-purified from mouse ascites by affinity-chromatography using epitope-specific immunogen.
Dilution	wb 1:1000
Concentration	1 mg/ml
Purity	≥90%
Storage Stability	-20°C/1 year
Synonyms	CSDD1;FLJ12457;LIN 28;Lin-28A;LIN28;LIN28A;LN28A_HUMAN;Protein lin-28 homolog A;ZCCHC1; Zinc finger CCHC domain-containing protein 1.
Observed Band	26kD
Cell Pathway	Cytoplasm . Rough endoplasmic reticulum . Cytoplasm, P-body . Cytoplasm, Stress granule . Nucleus, nucleolus . Predominantly cytoplasmic (PubMed:22118463). In the cytoplasm, localizes to peri-endoplasmic reticulum regions and detected in the microsomal fraction derived from rough endoplasmic reticulum (RER) following subcellular fractionation. May be bound to the cytosolic surface of RER on which ER-associated mRNAs are translated (By similarity). Shuttle from the nucleus to the cytoplasm requires RNA-binding (PubMed:17617744). Nucleolar localization is observed in 10-15% of the nuclei in differentiated myotubes (By similarity). .
Tissue Specificity	Expressed in embryonic stem cells, placenta and testis. Tends to be up-regulated in HER2-overexpressing breast tumors.
Function	developmental stage:Expressed in fetal liver. Expression decreases during differentiation of ES cells or upon induction of neuronal differentiation by retinoic acid.,domain:The CSD domain is required for function in muscle differentiation.,function:Acts as a 'translational enhancer', driving specific mRNAs to polysomes and thus increasing the efficiency of protein synthesis. Its association with the translational machinery and target mRNAs results in an increased number of initiation events per molecule of mRNA and, indirectly, in



stabilizing the mRNAs. Binds IGF2 mRNA, MYOD1 mRNA, ARBP/36B4 ribosomal protein mRNA and its own mRNA. Essential for skeletal muscle differentiation program through the translational up-regulation of IGF2 expression.,induction:Can be negatively regulated by the interaction of microRNAs miR-125a and miR-125b with at least two miRNA responsive elements (miREs) in

Background

This gene encodes a LIN-28 family RNA-binding protein that acts as a posttranscriptional regulator of genes involved in developmental timing and self-renewal in embryonic stem cells. The encoded protein functions through direct interaction with target mRNAs and by disrupting the maturation of certain miRNAs involved in embryonic development. This protein prevents the terminal processing of the LET7 family of microRNAs which are major regulators of cellular growth and differentiation. Aberrant expression of this gene is associated with cancer progression in multiple tissues. [provided by RefSeq, Sep 2015],

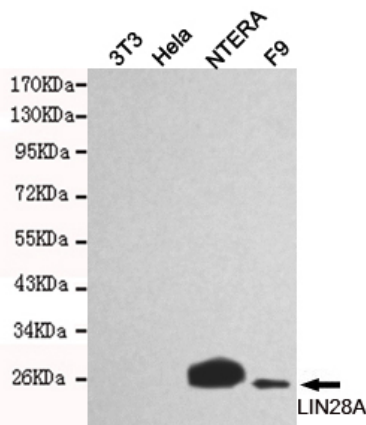
matters needing attention

Avoid repeated freezing and thawing!

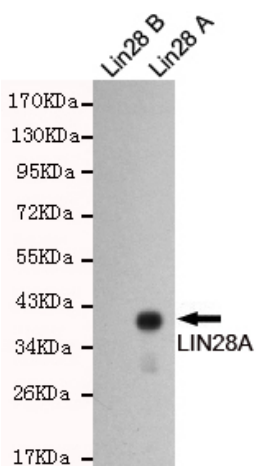
Usage suggestions

This product can be used in immunological reaction related experiments. For more information, please consult technical personnel.

Products Images



Western blot detection of LIN28 in NTERA and F9 cell lysates using LIN28A mouse mAb (1:1000 diluted). Predicted band size:26KDa. Observed band size:26KDa.



Western blot detection of LIN28A in LIN28B and LIN28A recombinant antigen fragments and using LIN28A mouse mAb (1:1000 diluted).